

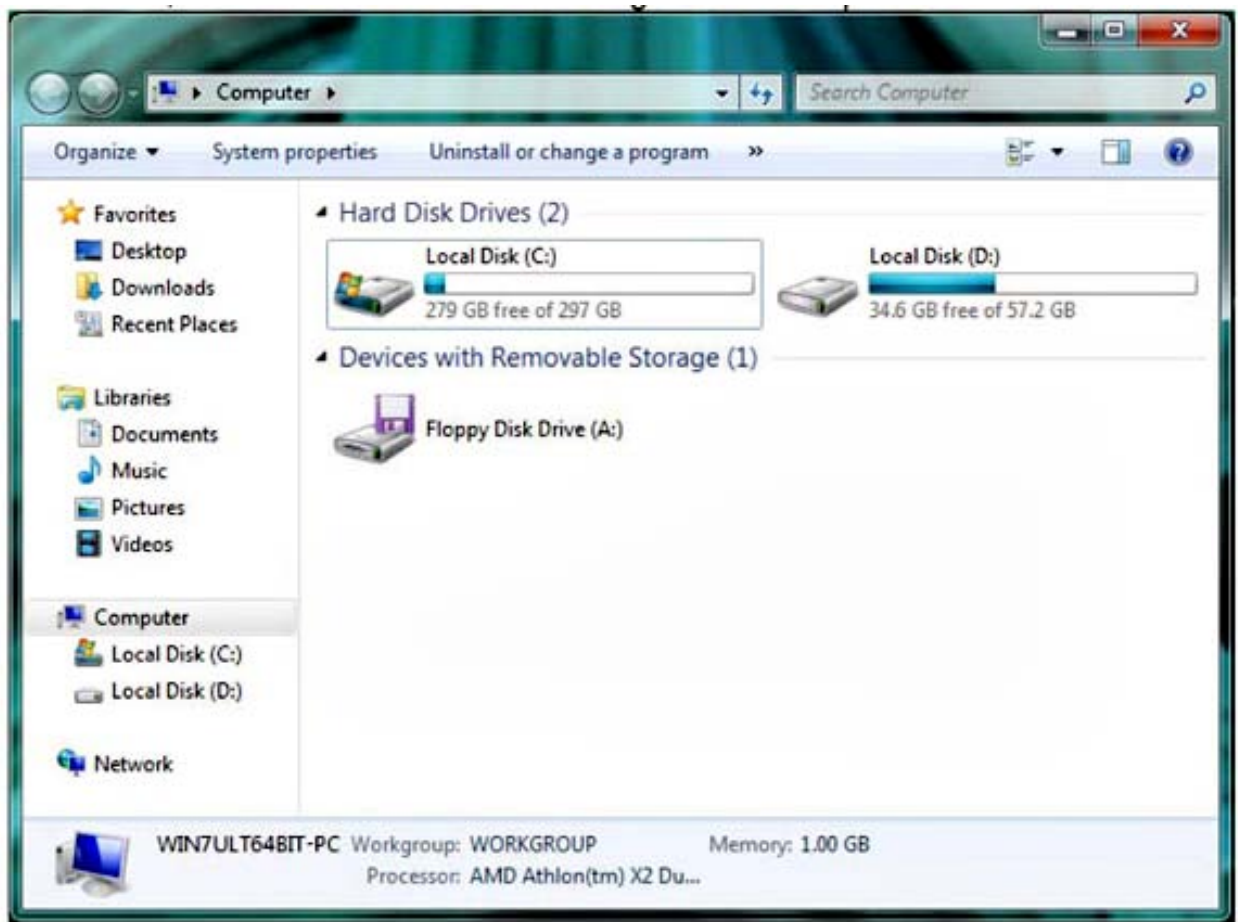
Windows 7 Hidden Media Drive Feature (Enabled)

No need for a custom color icon driver to identify drives with their corresponding card slots under Windows 7

Windows 7 Hidden Media Drive Feature

One of the new features of Windows 7 is that the Removable Media Device icons will no longer show up until a Media Card is inserted into the card slot of the Atech Flash USB media card readers. In other words, this new feature allows easy icon identification for a card slot that is being used and to hide other icons/slots that are not being used.

1. Connect your AFT reader to the computer (installation for each model varies). Please refer to the User's Guide for reference on installation.
2. Once your AFT reader is setup, power up your system.
3. Go to your "Computer" folder, as you will notice no Removable Media Device icons are shown, because none of them are being used at this point.



4. Now insert a Media Card (SDHC) into the designated card slot. Once inserted the LED will light up or flash.
5. If you take a look in the "Computer" folder again, only the icon associated with the Media Card (SDHC) shows up. The rest are hidden.

