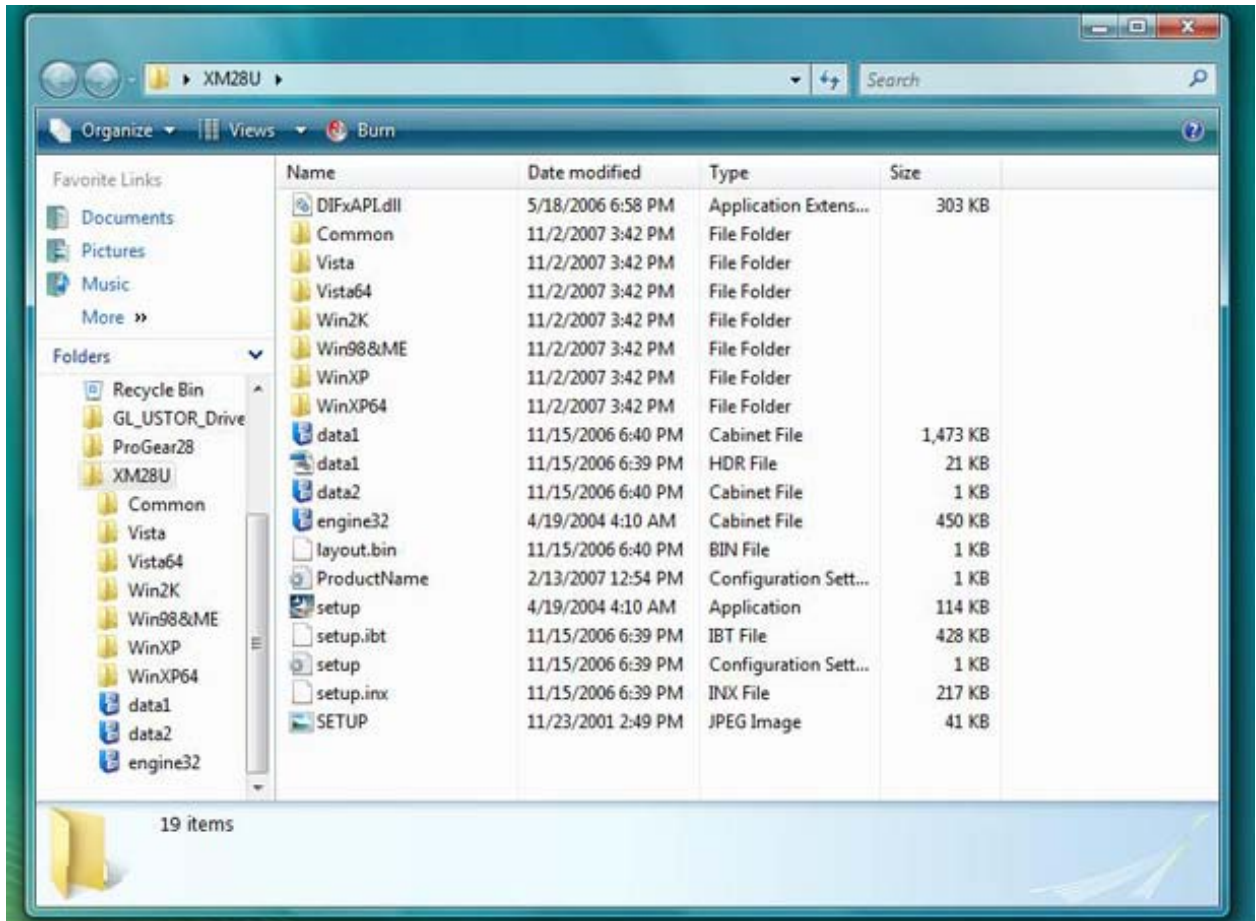
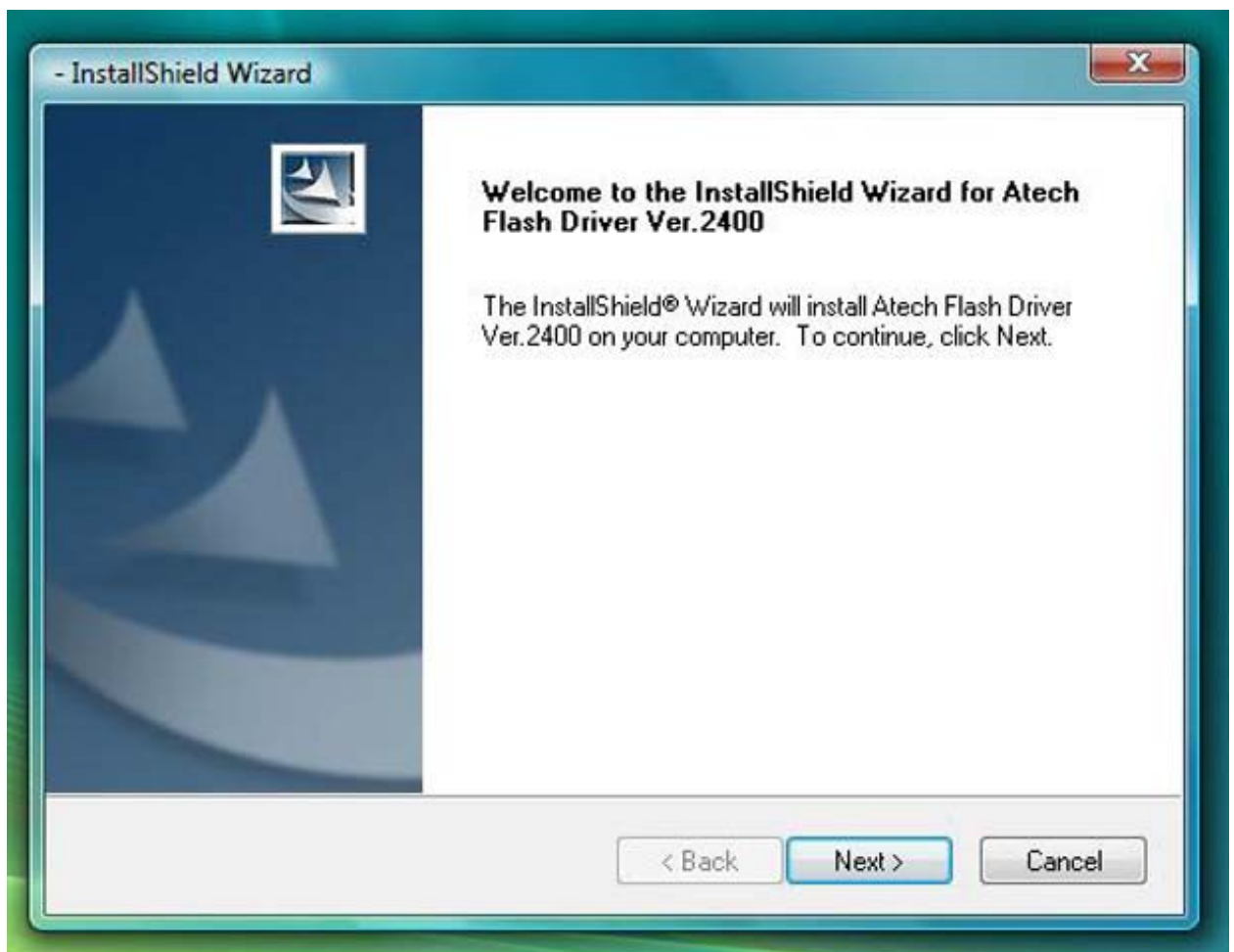


WINDOWS 7 ICON DRIVER INSTALLATION

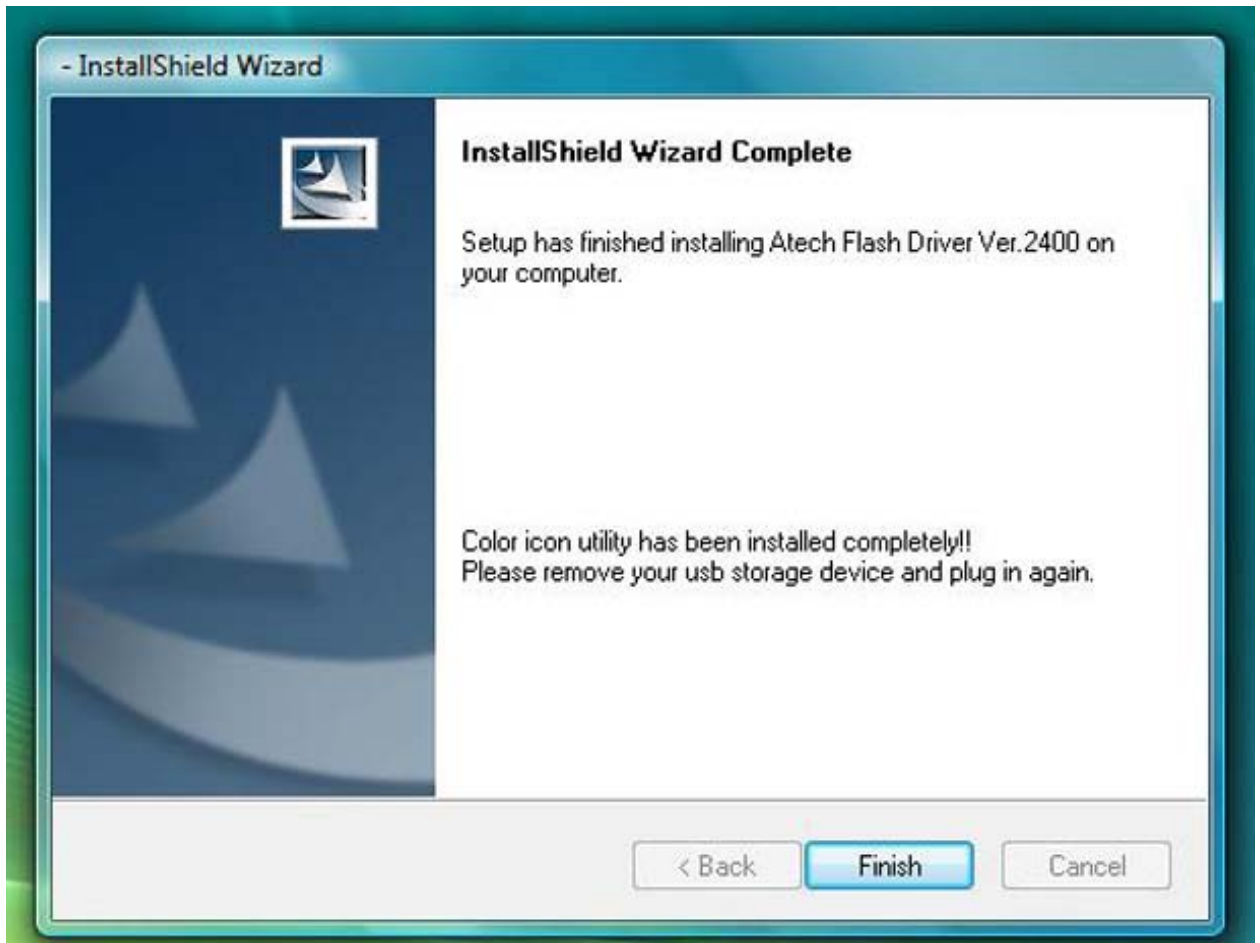
1. Double-click on the **Setup Driver** to begin the driver installation process.



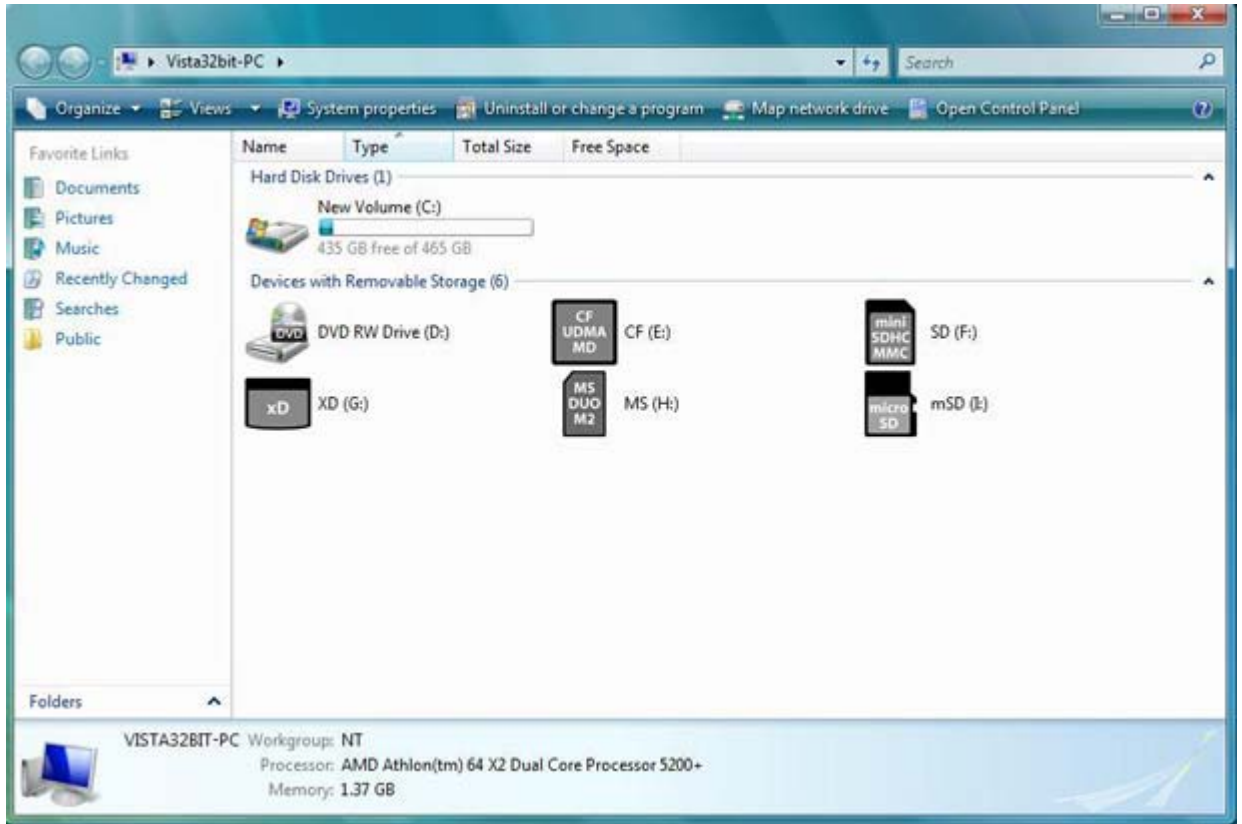
2. Follow the Atech Flash **Install Shield** steps on the screen.



3. After the driver is installed, it is recommended to **Restart your Computer** or **Unplug and Replug** the device to complete the driver installation process.



- Once your Computer has restarted , you will be able to see the Custom Media Card icons under **My Computer**. They will appear gray in color until you insert your media card into the reader.



- Once you insert the media card into the card reader, the icon will change from gray to color. The sample image below shows the icons with media cards inserted into all 4 slots. If only one slot is used, then only one of the icons will be in color.

