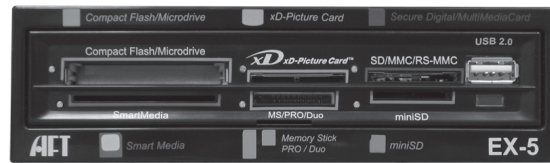


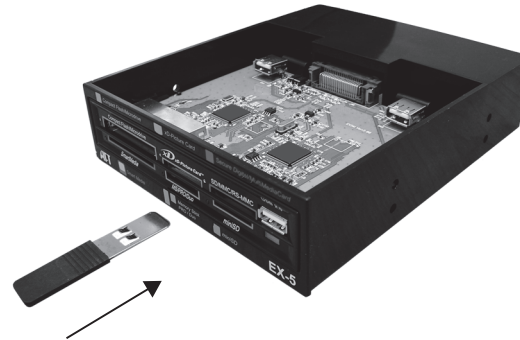
AFT Atech Flash Technology

EX-5 Service Guide

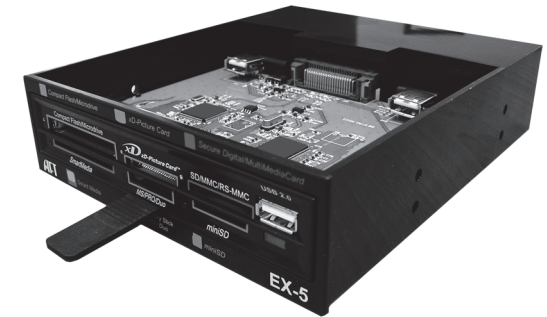


Warning: Please make sure to shut down your computer system before servicing the EX-5 reader

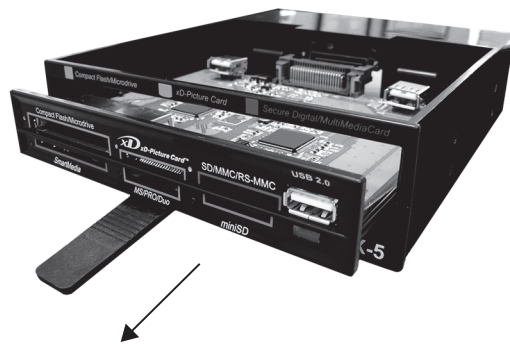
For more information or technical advise:
Call us toll free at 1-800-964-3088 (USA only)
email: support@atechflash.com
website: www.atechflash.com



1. Locate SERVICE KEY, make sure that the hooks are facing upwards

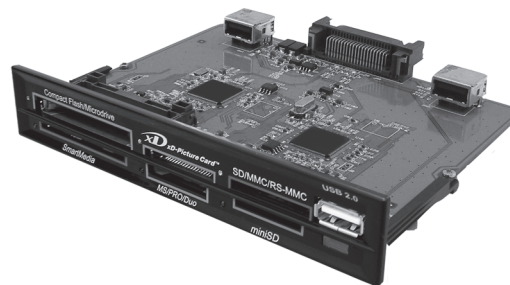


2. Insert SERVICE KEY into key slot located under the MS card slot

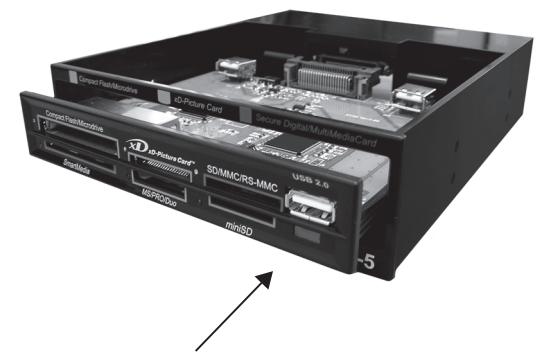


3. Push SERVICE KEY into slot and it will eject the Bezel/PCB

Use the SERVICE KEY to remove the Bezel/PCB from housing



4. After removing the old Bezel/PCB, take new Bezel/PCB and insert into housing of EX-5



5. Once new Bezel/PCB is installed into EX-5 Chassis, you can power up your system and test the new Bezel/PCB